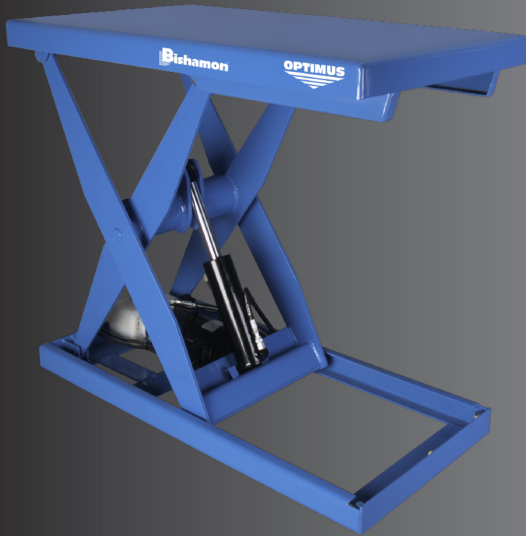


# Bishamon<sup>®</sup> *PRODUCT LINE*

Work Positioners



Pallet Lift & Move



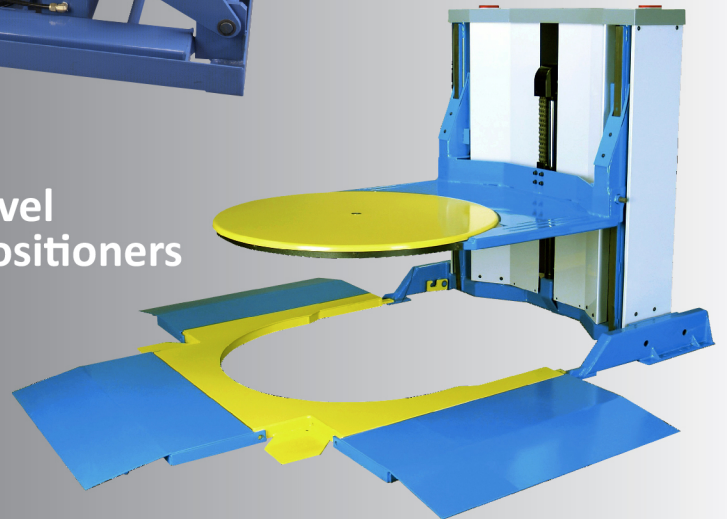
Pallet Positioners



Mobile Handling



Floor Level  
Pallet Positioners



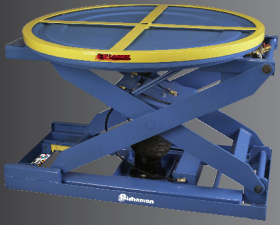
And More.....

**Working Harder To Make Your Job Easier**

# Pallet Handling

## EZ Loader<sup>®</sup>

Automatic Pallet Positioner



**The most advanced pallet positioner you can buy!**

- ▶ Handles capacities from 250 lbs. to 4,000 lbs.
- ▶ Three-position EZ-Adjust Knob allows adjustment of the collapsed capacity to 1,200 lbs. without changing air pressure
- ▶ Self-leveling system keeps the load at a convenient working height, helping to eliminate bending and improve productivity
- ▶ Integral rotator ring helps eliminate reaching and stretching
- ▶ Stainless steel model available

## EZ X Loader<sup>®</sup>

Economy Pallet Positioner

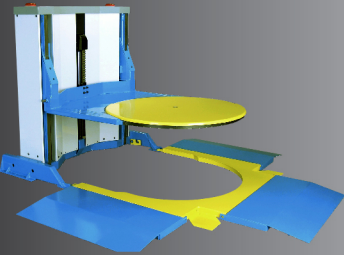


**Bishamon Air-System Quality at Mechanical Spring Pricing!**

- ▶ Handles capacities from 400 lbs. to 4,000 lbs.
- ▶ Self-leveling system keeps the load at a convenient working height, helping to eliminate bending and improve productivity
- ▶ Integral rotator ring helps eliminate reaching and stretching
- ▶ Captive air system eliminates mechanical springs
- ▶ Integral maintenance bars
- ▶ Easily transported with a fork truck like the EZ Loader

## EZ Off Lifter<sup>®</sup>

Floor Level Pallet Positioner



**Floor level pallet positioner with a rotating platform!**

- ▶ Handles loads up to 2,000 lbs. to a 30" maximum raised height
- ▶ Platform with 1.75" lowered height provides easy ramp access
- ▶ Rotating platform eliminates reaching stretching or the need to walk around the pallet to load or unload
- ▶ Two models to fit most any application. One model features a fixed ramp position and rests on the floor. The second model (shown) offers three ramp positions and must be attached to the floor
- ▶ 115 VAC hydraulic operation

## Lift Pilot<sup>®</sup>

Floor Level Pallet Positioner



**Ultra space-saving design with telescoping forks allows totally unobstructed pallet positioning!**

- ▶ Pallet truck accessible with no ramps or obstructions
- ▶ Unique space-saving design has the smallest footprint in the industry
- ▶ Operator has full access to 3 sides of the pallet with unobstructed access
- ▶ Handles GMA pallets, CHEP pallets and skids
- ▶ Automatic "foot clear" safety design with automatic carriage stop

## UniLift<sup>™</sup>

Pallet Lifter and Transporter



**Transports and ergonomically lifts standard GMA pallets up to 36" without cumbersome straddle legs!**

- ▶ Handles loads up to 2,000 lbs. to a 36" maximum raised height
- ▶ Handles and steers like a standard pallet jack
- ▶ Deployable outrigger technology eliminates cumbersome straddle legs
- ▶ Efficient 24 VAC battery system powers lift operation
- ▶ Multi-roller fork entry system for easy pallet entry and exit

# Work Positioning

## Optimus™ L2K, L3K, L5K Hydraulic Work Positioners



**OPTIMUS**  
LIFT TABLES

### The next generation of highly engineered work positioners!

- ▶ 2,000, 3,000 and 5,000 lbs. capacity models to choose from
- ▶ Two fixed platform sizes for each capacity plus optional rotating turntables
- ▶ Compliant with ANSI MH29.1:2012 "Safety Requirements for Industrial Scissors Lifts"
- ▶ Comprehensive fatigue, life cycle and performance testing
- ▶ Lifetime, maintenance free, composite bushings throughout

## Lo-Profile™ LX-Series Low Profile Work Positioners



### Provides easy access for pallet jacks and carts!

- ▶ A variety of models with capacities from 550 to 4,400 lbs.
- ▶ Provides hydraulic lifting power from a collapsed height as low as 2.9"
- ▶ Optional approach and pallet jack ramps available
- ▶ Variety of fixed platform sizes to choose from

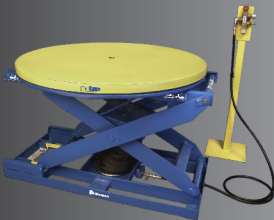
## CompacLift™ X-Series Compact Work Positioners



### An economical solution to positioning in tight spaces!

- ▶ A variety of models with capacities from 440 to 1,650 lbs.
- ▶ Variety of fixed platform sizes to choose from
- ▶ Available in manual foot pump, electro-hydraulic and air/hydraulic models
- ▶ Great for lifting and positioning work in confined areas
- ▶ Widely used in machine tool and other production line applications

## EZ UP® EZU-Series Pneumatic Work Positioners



### The convenience of air instead of electro-hydraulics!

- ▶ Capacity up to 1500 lbs.
- ▶ Available with integral rotating platform or fixed platform
- ▶ Ideal for areas where shop air is convenient and for clean room, paint station and many other applications
- ▶ Capacity up to 1500 lbs.



Visit our web site at: [www.bishamon.com/videoage.html](http://www.bishamon.com/videoage.html)  
And watch the following products in action!

- |                       |   |
|-----------------------|---|
| <b>EZ Loader®</b>     | Automatic Pallet Positioner                   |
| <b>EZ Off Lifter®</b> | Pallet Jack Accessible With Rotating Platform |
| <b>UniLift™</b>       | Pallet Transporter & Lifter                   |
| <b>Lift Pilot®</b>    | True Floor Level Pallet Positioner            |
| <b>ESX™</b>           | Self Leveling Mobile Cart                     |
| <b>LX™</b>            | Low Profile Lift Table                        |
| <b>LV/LVE™</b>        | Skid Lifters                                  |

# Mobile Handling

## MobiLift™ BX-Series

Mobile Work Positioner



**Top-quality mobile lifts for added flexibility.**

- ▶ Models with capacities from 330 lbs. up to 1,760 lbs.
- ▶ Manual foot-pump and battery operated lift models
- ▶ Double scissor models available for high-lift applications
- ▶ Stainless steel models available

## SkidLift™ LV/LVE Series

Skid Lifts

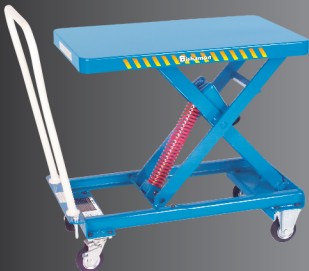


**The most stable skid lifters/transporters available.**

- ▶ Models with capacities of 1,100 lbs. and 2,200 lbs.
- ▶ Manual foot pump and battery operated lift models
- ▶ For skids only - no pallets with closed bottom boards
- ▶ Optional tabletop work platform available

## MobiLeveler® ESX-Series

Self Leveling Mobile Cart



- ▶ Three models handling capacities from 66 to 880 lbs.
- ▶ Self-leveling spring actuated
- ▶ Gauged adjustment knob
- ▶ Infinitely adjustable

## EZ-Mover™ Blue Label

Pallet Jacks



- ▶ 2,500, 5,500 & 6,500 lbs. models
- ▶ 32" to 48" fork lengths
- ▶ 20.5" & 27" fork widths
- ▶ Quality construction throughout

DISTRIBUTED BY:

# Bishamon

Bishamon Industries Corporation

5651 East Francis Street  
Ontario, California 91761-3601

PH: 800-358-8833 US & Canada  
909-390-0055 Outside US/CN  
Fax: 800-700-0492

[www.bishamon.com](http://www.bishamon.com)



Warranty - Bishamon Industries Corp. ("Bishamon") warrants its products to be free from defects in material and workmanship for a period of one (1) year from the date of initial shipment. This warranty shall not apply to any misuse, mishandling, accident, shipping, alteration, or unauthorized repair of any Bishamon product or part. For complete details of warranty, please contact Bishamon at 800-358-8833.

BIC-PL-04-17