



PRO-TECH MATS INDUSTRIES, INC.

Introducing the *revolutionary*, indestructible Ortho **TUFF Skin** mat



ORTHO TUFF SKIN

The world's leading anti-fatigue matting and one of the most durable coatings in existence combine to give you one of the most unique mats on the market today; *making this the last mat you will **EVER** buy!*

2015-16

Why choose Ortho TUFF Skin ... because *no* other mat can be made into *any* shape, size, or configuration and still look clean and professional with it's seamless finish

With our innovative design, we have come up with a mat that is just as indestructible as it is versatile

There is no competition, the Ortho TUFF Skin is the most *unique* mat on the planet!

Features:

- Manufactured with Ortho Mat closed cell NBR sponge and ultra durable top coat
- Seamless top to avoid mat separation and tripping
- Ortho TUFF Skin Mats are complete with a 2" safety bevel for ease of cart traffic & added safety

Benefits:

- Immediate increase in employee morale & productivity due to workplace comfort
- Guaranteed reduction of exposure to prolonged cold, heat, and vibration
- Ergonomically designed to reduce back, leg, foot, and ankle fatigue

Top surface options:

- TUFF Skin protective coating available in black, or yellow
- Other TUFF Skin coating colors available in large quantities with extended lead times

Warranty:

- The Ortho TUFF Skin Mat is guaranteed against defects in materials and workmanship for 2 years, *including* premature wear
*Pro-Rated based on conditions of use
- Life expectancy 5-8 years

Please Note: Ortho TUFF skin Mats have been specifically designed to reduce the risk of slips & falls, while increasing safety and comfort in the workplace. Pro-Tech Mats Industries, Inc. accepts no responsibility for damages involving the use of our products. No product can guarantee that accidents will not happen. Suitability to task and operations in all aspects must be determined by the user of the mat.

Also available:

Ask your Supply Rep. about the full line of Ortho Mat products including Ortho 1, Ortho 2, ESD, Anti-Slip, Duro, & Ortho TUFF Skin Professional Salon Mat

PATENT PENDING

Cleaning:

- Easy to clean surface
- For disinfectant cleaning follow your normal protocol

Guarantee:

- The Ortho TUFF Skin mat is endorsed by Chiropractors & Orthopedic Surgeons
- Ortho TUFF Skin Mat welcomes the opportunity to be compared. We will proudly provide samples for testing

ORTHO MAT®

Proudly Distributed By:

2015

The TUFF Skin mats should NOT be rolled backward or folded; ALWAYS flip mat upside down & then roll with the top side out. Never leave objects over 20 lbs. on the mat for more than 24 hours. The TUFF Skin mat is not meant for repeated narrow based high heel usage and may become damaged. Never weld on the TUFF Skin Mat.

Ortho TUFF Skin

Rubberize Your Floors With These Available Sizes

<u>Part #:</u>	<u>Size:</u>	<u>List Price:</u>	<u>Weight:</u>
PTMOTS243634	2' x 3' x 3/4"	\$ 75.00	4.50 lbs.
PTMOTS363634	3' x 3' x 3/4"	\$112.50	6.75 lbs.
PTMOTS364834	3' x 4' x 3/4"	\$150.00	9.00 lbs.
PTMOTS366034	3' x 5' x 3/4"	\$187.50	11.25 lbs.

Let Your Imagination Run Wild...

This amazing flooring product can be fabricated to any shape or size

Please submit drawing with dimensions and beveling specifications to your local Rep. for a *custom* quote. Standard sizes \$12.50/sq. ft.
Custom sizes \$13.50 / sq. ft.

Pricing tends to slightly increase on custom mats depending on dimensions and configurations of the mat.



Yellow 2" safety borders available

\$6.00 per lin. ft. on standard sizes; \$7.00 per lin. ft for custom mats

Start improving safety & productivity in the following areas:

- Industrial work cell/stations
- Hotel front end departments
- Security & ticket booths
- Cashier & counting cages
- Gyms & golf service areas
- Table top mats
- Stand up forklift pads
- Equipment box liners
- And *many* more applications!

Top surface options:

- TUFF Skin protective coating available in Black or yellow
- Surface does not shed, making it perfect for clean room usage
- Other TUFF Skin coating colors available in large quantities with extended lead times

Customize your Ortho TUFF Skin Mats:

- Custom sizes, shapes, and die cut pieces available
- Available with custom logos, ask your supply rep for a quote and specifications

Flooring:

- Wall to wall TUFF Skin flooring should be ordered oversize and cut to fit on location to match exact room dimensions

Non-slip properties:

- The Anti-Slip surface is excellent for wet & dry applications *stock sizes only
- The standard surface is used for dry applications only



Ortho TUFF Skin *Signature* Series Mat



These personal comfort mats are the last mat you will ever buy!

Manufactured with or without the 2" safety stripe,
they are the best quality mats on the planet!

FEATURES:

- 1-1/2" bevel
- Rounded corners to reduce tripping and improve appearance
- Texture coated backside to help keep the mat in place on polished floors or carpet

Yellow Border	◦	PTMTSSSY	24" x 36" x 3/4"	◦	List price: \$105.00
Black	◦	PTMTSSSB	24" x 36" x 3/4"	◦	List price: \$75.00

Manufactured by Pro-Tech Mats with virgin NBR closed cell sponge
and our extremely durable TUFF Skin top coat.

Try one today, I know you will love it. I personally guarantee it!

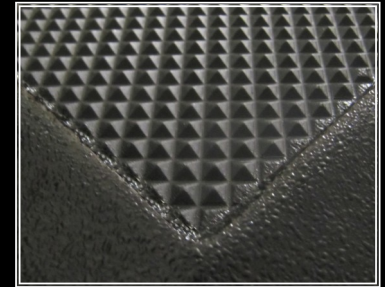
Randy Ernst

Ortho TUFF Skin Machinist Mat

Specially designed to have superior durability and optimal comfort in wet, oily, & slippery areas



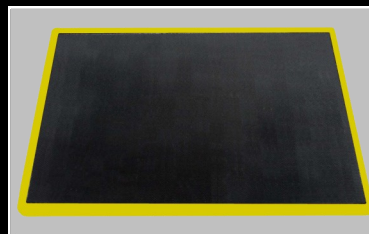
*Machinist Mat shown with yellow safety border.
Custom shapes and sizes available; contact your sales rep for a quote.*



With it's one of a kind rugged design, this is without a doubt the **BEST** non-slip mat on the market today!!



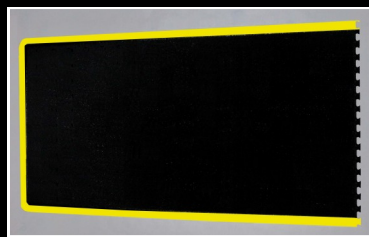
TSM3534 \$187.00
3' x 5' x 3/4"



TSM3534Y \$235.00
3' x 5' x 3/4"



TSM3534PE \$188.00
3' x 5' x 3/4"



TSM3534PEY \$236.00
3' x 5' x 3/4"



TSM3534PM \$189.00
3' x 5' x 3/4"



TSM3534PMY \$237.00
3' x 5' x 3/4"

Improve productivity & safety in the following areas:

- Steel workers
- Trade workers
- Industrial cell/Work stations
- Sheet metal workers
- Security & Ticket booths
- Automotive manufacturing
- Chemical plants
- Shipping & receiving areas
- Factory & fabrication
- Stand up forklift pads
- Mechanic areas
- *Many* more applications!

Non-slip properties:

- Specially engineered raised pyramid pattern is excellent for wet or dry applications
- Our non-directional pyramid pattern increases traction and reduces water pooling, ensuring safer foot traffic